

Health of Hertford Co.

Hertford County Board of Health

- ◇ Howard Hunter III, Hertford County Commissioner - Chairman
- ◇ Claudia Richardson, M.D. - Vice Chair
- ◇ Terry Hall, D.M.D.
- ◇ Johnny Sessoms, PharmD
- ◇ William Stephens
- ◇ Westelle Cherry, RN, F.N.P.-Retired
- ◇ Lou Valazquez, PA
- ◇ Nettie Evans, RN, MSN
- ◇ Charles Reynolds

Hertford Partners For Health

- ◇ Walter Thomas, Co-Chair
- ◇ Viretta Vann, Co-Chair
- ◇ Lisa Newsome, Committee Chair
- ◇ Hope Eley, Committee Chair
- ◇ Rhonda Roscoe, Committee Chair
- ◇ Sandra Stephenson, Committee Chair
- ◇ Brenda Sessoms, Healthy Carolinians Coordinator

Compiled By:

Nikki M. Moore, CHES
HCPHA/CDC Apprentice

Barbara Earley, R.N., MSN
Director of Health Planning
and Resource Development



**Disease Prevention, Health Protection,
Health Promotion.**

Everywhere. Everyday. Everybody.



Public Health
Prevent. Promote. Protect.

Hertford County Public Health Authority
<http://www.hertfordpublichealth.com>

Submitted By the HCPHA Health Planning Division

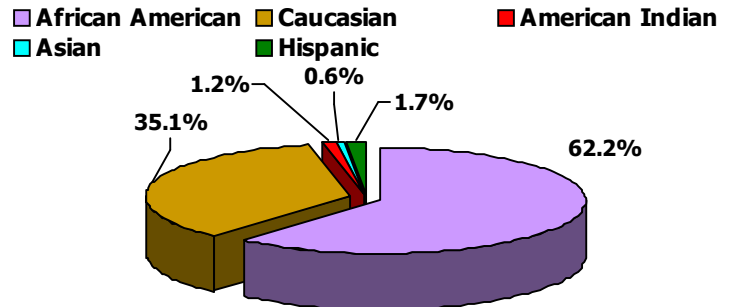


Purpose

This document provides a mid-cycle review of the priority health issues, determined during the 2007 Community Health Assessment; compiled and published by Hertford Partners for Health (HP4H). Over the past few years, Hertford Partners for Health, Hertford County Public Health Authority (HCPHA), and other community partners have worked to address several community concerns. This document summarizes the status of our combined efforts.



Hertford County 2006 Estimated Population Distribution By Race



Hertford County Demographics

Demographics	Hertford County	NC
Population, 2006 estimate	23,581	8,856,505
Population, 2000	22,601	8,049,313
White persons, 2006	35.1%	74.0%
Black persons, 2006	62.2%	21.7%
American Indian & Alaska Native persons, 2006	1.2%	1.3%
Asian persons, 2006	0.6%	1.9%
Persons of Hispanic or Latino origin, 2006	1.7%	6.7%
High school graduates, % of persons age 25+, 2000	65.6%	78.1%
Bachelor's degree or higher, % of persons age 25+, 2000	11.1%	22.5%
Per capita money income, 1999	\$15,641	\$20,307
Persons below poverty, 2004	20.8%	13.8%
Unemployment Rate July 2008	7.3% (758 residents)	6.6%

*Data in bold print shows notable difference from the state.
Demographic data derived from www.bls.gov and www.census.gov

- The majority of the population in Hertford County is African American (AA). In the 2000 census, of the 100 counties in North Carolina **Hertford County was ranked 2nd in the state for percent of population African American.**
- The Hispanic population in Hertford County is very small compared to other NC counties. In the 2000 census, **Hertford County was ranked 78th in the state for percent of population Hispanic.**
- As of July 2008 there were 10,409 residents that made up the labor force (people who are able to work) in Hertford County. However, **758 of the residents that are a part of the labor force are currently unemployed.**

Separately, HCPHA and Hertford Partners for Health identified priorities to be addressed within the community; many of which overlapped. When combined, there are 11 health indicators that have been the focus of the two organizations over the past several years.

Community Health Priorities

Hertford Partners for Health (2007-2010)

- Chronic Disease
(*addresses Heart Disease, Obesity, Diabetes, & Stroke*)
- HIV & STDs
- Teen Pregnancy
- Cancer
(*addresses Breast & Prostate Cancers*)

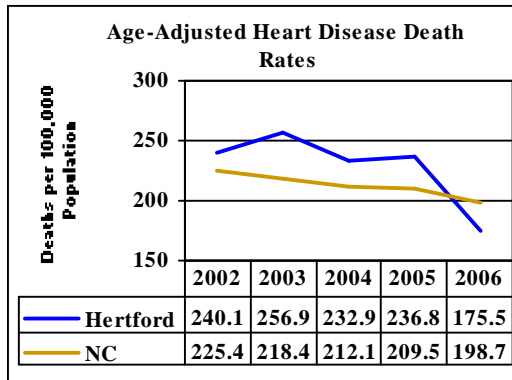
HCPHA (2006-2009)

- Obesity
- HIV/AIDS
- Diabetes
- Preconception Health
(*addresses Infant Mortality & Teen Pregnancy*)
- Heart Disease
- Public Health Emergencies
(*i.e. Bioterrorism and Pandemic Influenza*)

Priority: Heart Disease

Analysis:

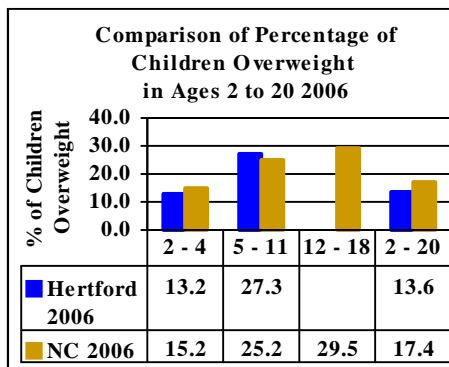
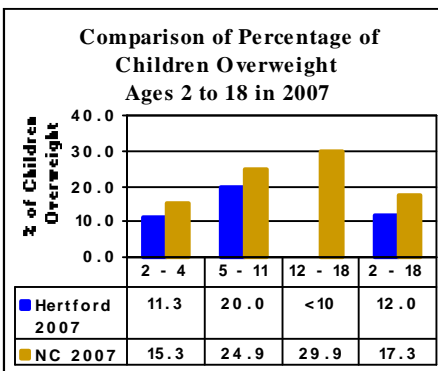
- There were 64 deaths due to heart disease in 2006. More than half of these deaths were minorities (32 AA, 2 AI).
- The rate decreased from 2005 to 2006, placing Hertford County just below the state's rate.
- From 2002-2006, Hertford County's average death rate was 231 compared to the state at 218.
- Hertford County ranked #43 out of the 100 counties from 2002-2006 for Heart Disease deaths.**



Priority: Obesity

Analysis:

- Out of the 353 children assessed in 2006, 48 were found to be overweight.
- In 2007, out of the 416 children assessed, 50 children ages 2-18 were found to be overweight.
- In 2006, Hertford County ranked # 15 in the state with 13.6% of children ages 2-20 overweight.**



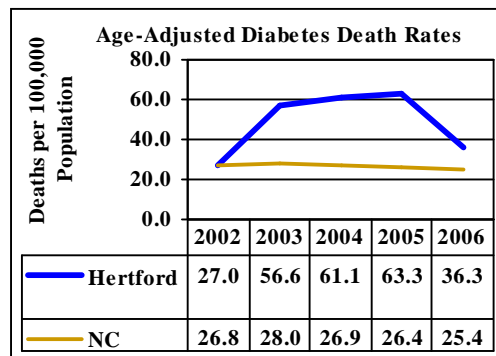
* Data extracted from NC NPASS www.eatsmartmovemorenc.com

**Only data assessed through HCPHA WIC and Child Health Services are reported, and not always provided for all age groups.

Priority: Diabetes

Analysis:

- There were 12 deaths due to diabetes in 2006. More than half of these deaths were minorities (11 AA, 1 White).
- There were 18 deaths in 2005. The Diabetes death rate in Hertford County continues to place above the state's rate.
- For the average from 2002-2006, Hertford County's death rate was 48 compared to the state at 27.
- Hertford County ranks # 8 out of the 100 counties for 2002-2006 Diabetes Mellitus death rate.**



Addressing Chronic Disease in Hertford County

HCPHA

- Initiated "Take 10" program in school system
- NC Eat Smart, Move More Health Promotion Initiative
- Diabetes Prevention activities in local African American Churches, Barber Shops, and Hair Salons
- Marked walking trails at local churches and schools
- Youth Tobacco Use Prevention and Cessation Program

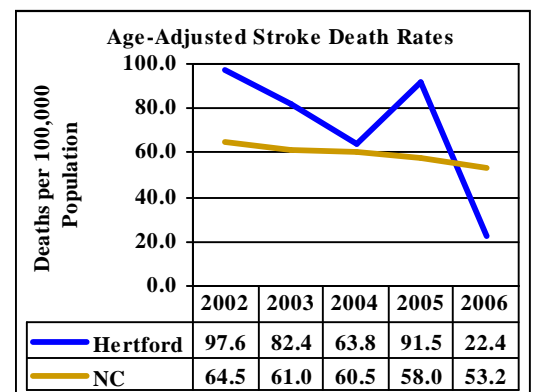
HP4H

- News release regarding increasing obesity rates among children
- Signage for walking trails at local churches and schools
- Healthy food option availability in schools and churches

Priority: Stroke

Analysis:

- There were 8 deaths in Hertford County due to strokes in 2006. More than half of these deaths were minorities (6 AA, 2 White). There were 24 deaths in 2005.
- Up until 2006 stroke death rates in Hertford County placed above the state's rate. From 2005 to 2006 there was a considerable decrease, leaving Hertford County's death rate well below the state's.
- For the five year average from 2002-2006, Hertford County's death rate was 71 compared to the state at 61.
- The death rate for Stroke in Hertford County ranked #19 out of the 100 counties for 2002-2006.**



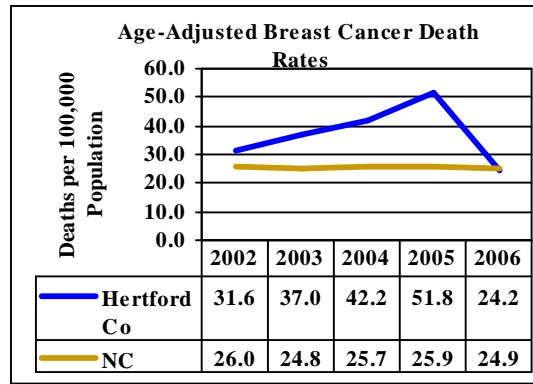
*Data listed under analysis sections have been rounded to the nearest whole number

* Data extracted from NC State Center for Health Statistics www.schs.state.nc.us/ unless otherwise indicated.

Priority: Breast Cancer

Analysis:

- In 2006 there were 4 deaths in Hertford County due to breast cancer; more than half of these deaths were minorities (3 AA, 1 White); There were only 2 deaths in 2005.
- Up until 2005 breast cancer death rate in Hertford County held a steadily increasing place above the state's rate.
- For the five year average from 2002-2006, Hertford County's death rate was 46 compared to the state at 25.
- The death rate for Breast Cancer in Hertford County ranked #7 out of the 100 counties for 2002-2006.**



Addressing Cancer in Hertford County

HCPHA

- Implementing the NC Breast and Cervical Cancer Control Program
- Prostate Specific Antigen Screening
- Educational Displays at Health Fairs
- Men's Health

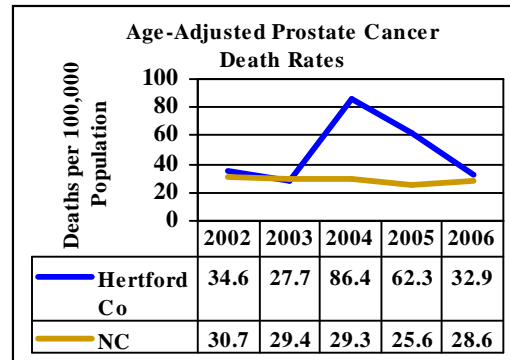
HP4H

- News release regarding the increasing rate of cancer in Hertford County

Priority: Prostate Cancer

Analysis:

- There were 4 deaths in Hertford County due to prostate cancer; more than half of these deaths were minorities (3 AA, 1 White) There were only 2 deaths in 2005.
- There was a considerable decrease in death rate from 2004 to 2006 for Hertford County, however the county continues to place above the state's rate.
- For the five year average from 2002-2006, Hertford County's death rate was 45 compared to the state at 29.
- The death rate for Prostate Cancer in Hertford County ranked #6 out of the 100 counties for 2002-2006.**



Addressing Preconception Health in Hertford County

HCPHA

- Established Hertford County Preconception Coalition (HCPC)
- Implementing the Adolescent Parenting Program (APP)
- Family Planning Clinic
- Child Services Coordination (CSC)
- Family Child Coordination (FCC)
- Maternal Child Coordination (MCC)
- Community Outreach Advocacy
- Established Hertford County Teen Pregnancy Prevention Task Force

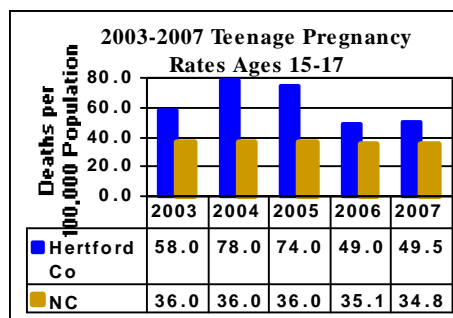
HP4H

- News release regarding high county pregnancy rates
- Posted two Billboards with preventing teen pregnancy and abstinence messages with Northampton County
- Provided resources to health teachers and counselors at beginning of school
- Established a Minister's Council to "Take the Message to the Pulpit"

Priority: Teenage Pregnancy

Analysis:

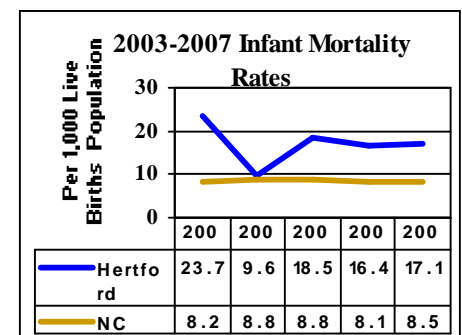
- There were a total of 27 pregnancies in females ages 15-17 in 2007 (25 minority, 2 White); same total as 2006.
- Hertford County currently ranks #28 in the state for incidence of teen pregnancy, dramatic drop from 3rd in the state in 2006.**
- Our decrease in rank may be due to other counties increase in teen pregnancies in comparison to Hertford County.



Priority: Infant Mortality

Analysis:

- There were a total of 5 infant deaths in 2007 (4 minority, 1 white); 5 death in 2006 (3 minority, 2 white).
- Hertford County's rate continues to remain above the state's rate.
- Hertford County currently **rank #1 in the state for infant mortality.**



*Data listed under analysis sections have been rounded to the nearest whole number

* Data extracted from NC State Center for Health Statistics www.schs.state.nc.us/ unless otherwise indicated.

Addressing Communicable Diseases in Hertford County

HCPHA

- Health In Motion (HIM) - Mobile medical van provides education and testing in the county
- Jail Education and Testing
- Nontraditional Outreach Community Testing
- STD Clinics
- Epidemiology Teams

HP4H

- News release regarding the county's high HIV and Sexually Transmitted Disease rates
- Established Partnership with the Northeastern NC Partnership for Public Health (NENCPPH)

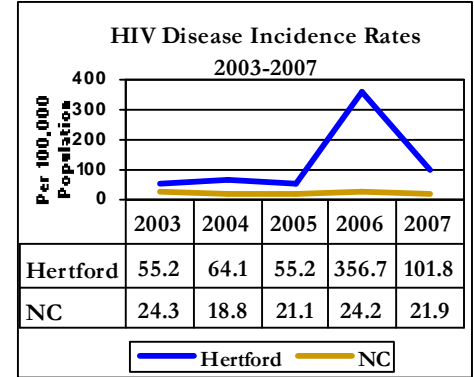
Priority: HIV Disease Incidence

Analysis:

New Cases of HIV in Hertford County By Year

2007: 24 cases
2006: 86 cases
2005: 13 cases
2004: 15 cases
2003: 13 cases

- As of 2007, there were 117 people living with HIV Disease in Hertford County.
- For the three year average from 2005-2007, Hertford County's HIV case rate was alarmingly 174 compared to the state at 22.
- **Hertford County currently ranks #1 in the state for new cases of HIV Disease for 2005-2007.**



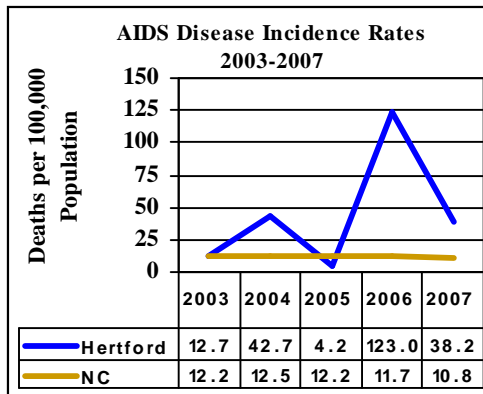
Priority: AIDS Disease Incidence

Analysis:

New Cases of AIDS in Hertford County By Year

2007: 9 cases
2006: 29 cases
2005: 1 cases
2004: 10 cases
2003: 3 cases

- As of 2007 there were 72 people living with AIDS Disease in Hertford County.
- For the three year average from 2005-2007, Hertford County's AIDS case rate was 55 compared to the state at 11.
- **Hertford County currently ranks #1 in the state for cases of AIDS for 2005-2007.**



Priority: Sexually Transmitted Diseases

Analysis:

- In 2007 there were 41 cases of Gonorrhea (rate -174) in Hertford County; compared to 90 cases in 2006 (rate - 382).
- **Hertford County ranked # 36 out of the 100 counties for rate of Gonorrhea cases in 2007**
- In 2007 there were 101 cases of Chlamydia (rate - 428) in Hertford County; compared to 176 in 2006 (rate - 746).
- **Hertford County ranked # 25 out of the 100 counties for rate of Chlamydia cases in 2007.**
- There were no cases of Syphilis in 2007 and only 1 case (2006) in the past five years.

Emerging Health Concerns in Hertford County

- Pandemic Influenza Preparation
- Mental Health
- Arthritis
- Vector-related illnesses (i.e. Malaria)
- Motor Vehicular Accidents
- Influenza
- Pneumonia
- Youth Obesity

*Data listed under analysis sections have been rounded to the nearest whole number

* Data extracted from HIV/STD Prevention and Care Branch www.epi.state.nc.us unless otherwise indicated.



How Can You Get Involved?

For more information contact the Health Promotion or the Health Planning Division with Hertford County Public Health Authority at (252) 358-7833 or go online to www.hertfordpublichealth.com



Public Health
Prevent. Promote. Protect.

For more information about Hertford Partners for Health contact

Public Health
Prevent. Promote. Protect.

Healthy Carolinians Coordinator Brenda Sessoms at (252) 358-7833 or by email at Brenda.sessoms@ncmail.net

Hertford County Public Health Authority

Administrative & Environmental Health Offices

801 North King Street
Winton, NC 27986
252-358-7833
(252)358-7869 fax

Chronic Disease Management and Outreach Services

714 Evans Street
Ahoskie, NC 27910
252-332-6650

Personal Health Services

828 South Academy St.
Ahoskie, NC 27910
252-332-6650

Health Promotion Services

800 Taylor Street
Winton, NC 27986
252-358-7833

WIC Services

718 Evans St.
Ahoskie, NC 27910
252-862-4217

Hertford Home Health Agency

704 Evans Street
Ahoskie, NC 27910
252-332-6747

Health Statistic Resources:

US Department of Labor – www.bls.gov/lau/

National Center for Health Statistics- www.cdc.gov/nchs

NC CATCH- www.schs.state.nc.us/SCHS/catch/

NC Center for Health Statistics- www.schs.state.nc.us/

NC Communicable Disease Information- www.epi.state.nc.us/

NC Health Information- www.nchealthinfo.org

NC State Demographics-demog.state.nc.us/

NC State Data Center- sdc.state.nc.us

NC Vital Records- vitalrecords.dhhs.state.nc.us

United States Census Bureau- www.census.gov

NC NPASS– www.eatsmartmovemorenc.com